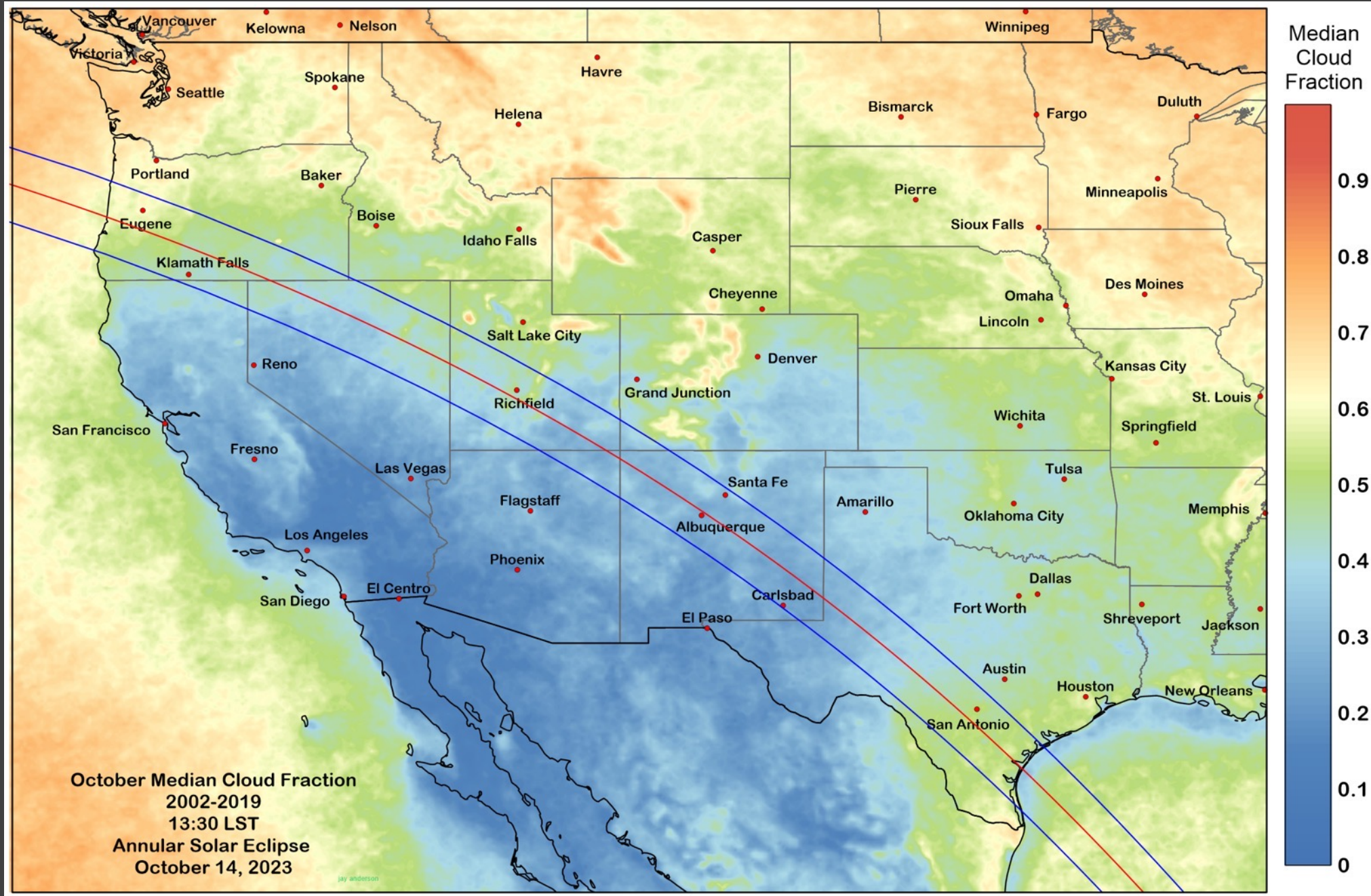
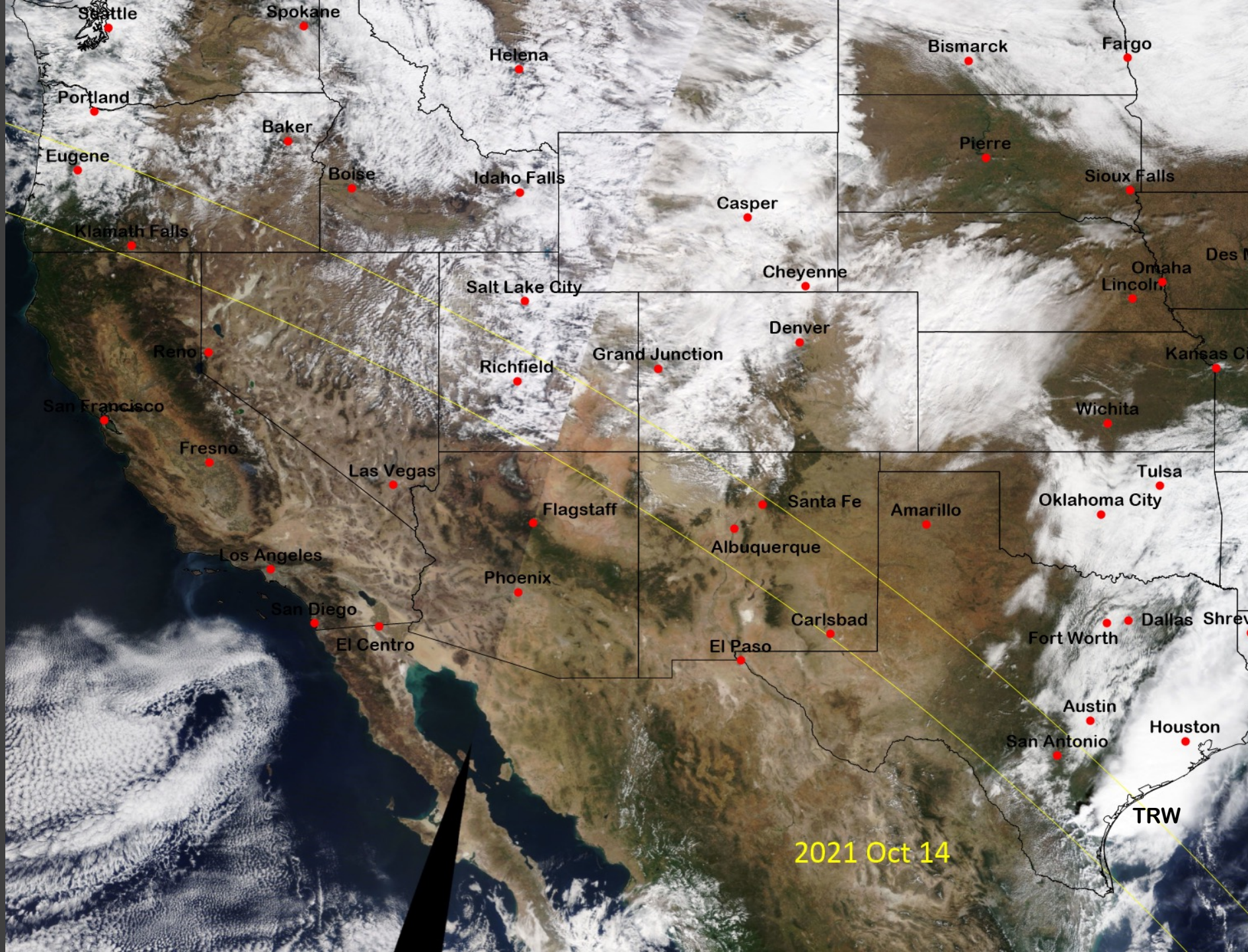


Some thoughts on planning for the weather ahead of the eclipse







Seattle

Spokane

Helena

Bismarck

Fargo

Portland

Baker

Pierre

Sioux Falls

Eugene

Boise

Idaho Falls

Casper

Klamath Falls

Cheyenne

Omaha
Lincoln

Des M

Salt Lake City

Denver

Wichita

Kansas City

Reno

Richfield

Grand Junction

San Francisco

Fresno

Las Vegas

Flagstaff

Santa Fe

Amarillo

Oklahoma City

Tulsa

Los Angeles

Phoenix

Albuquerque

Carlsbad

Fort Worth

Dallas Shrev

San Diego

El Centro

El Paso

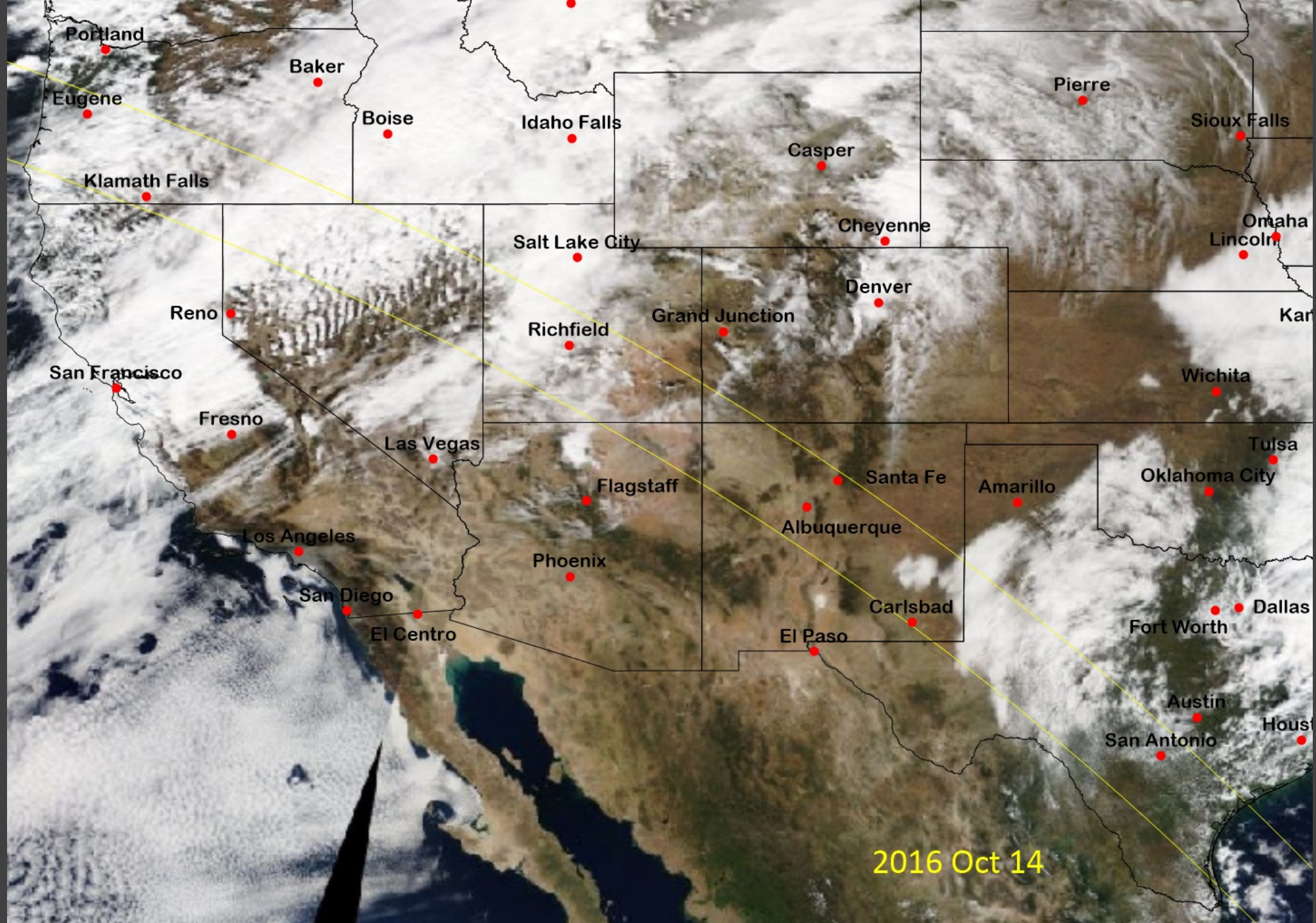
Austin

San Antonio

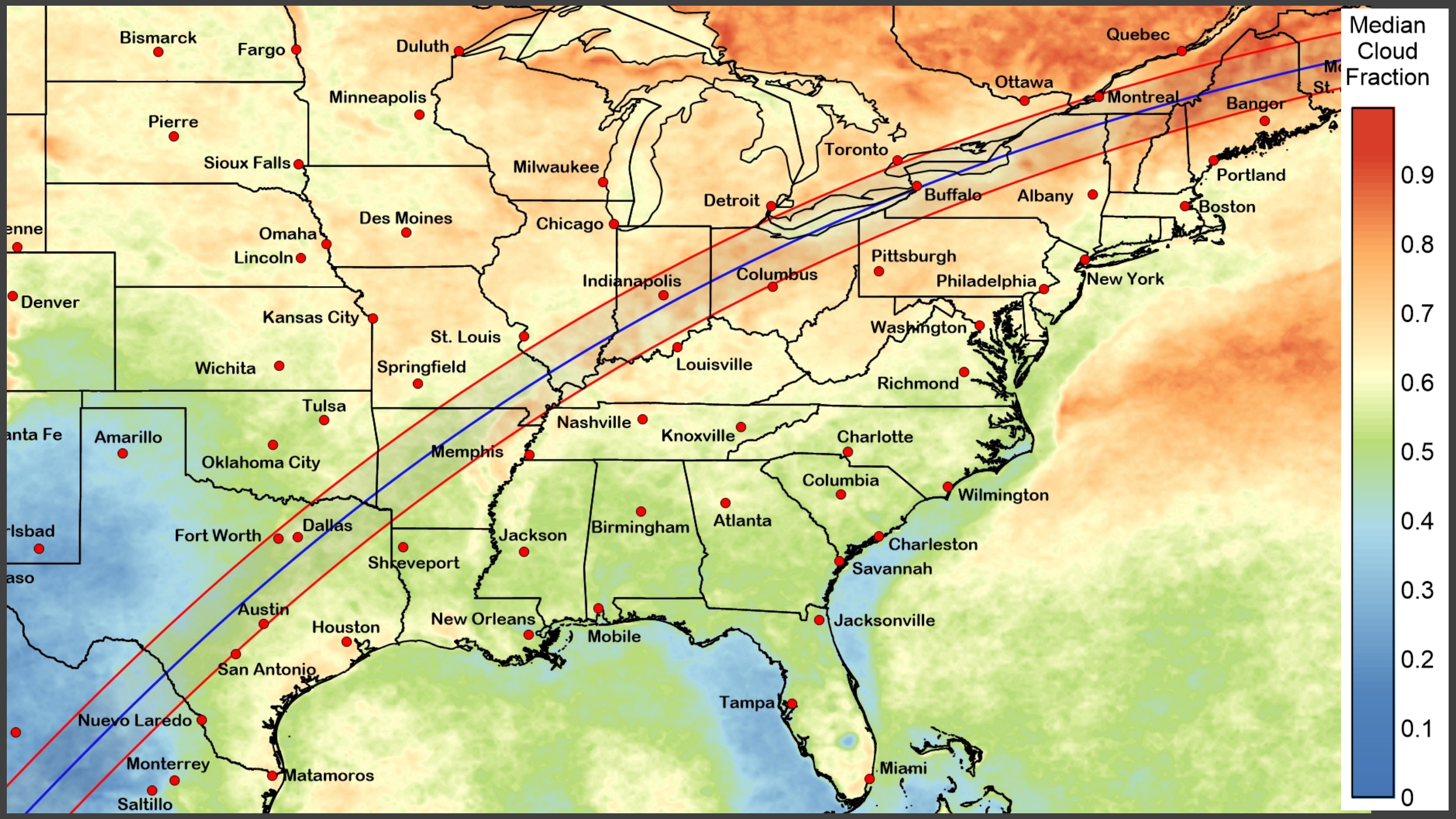
Houston

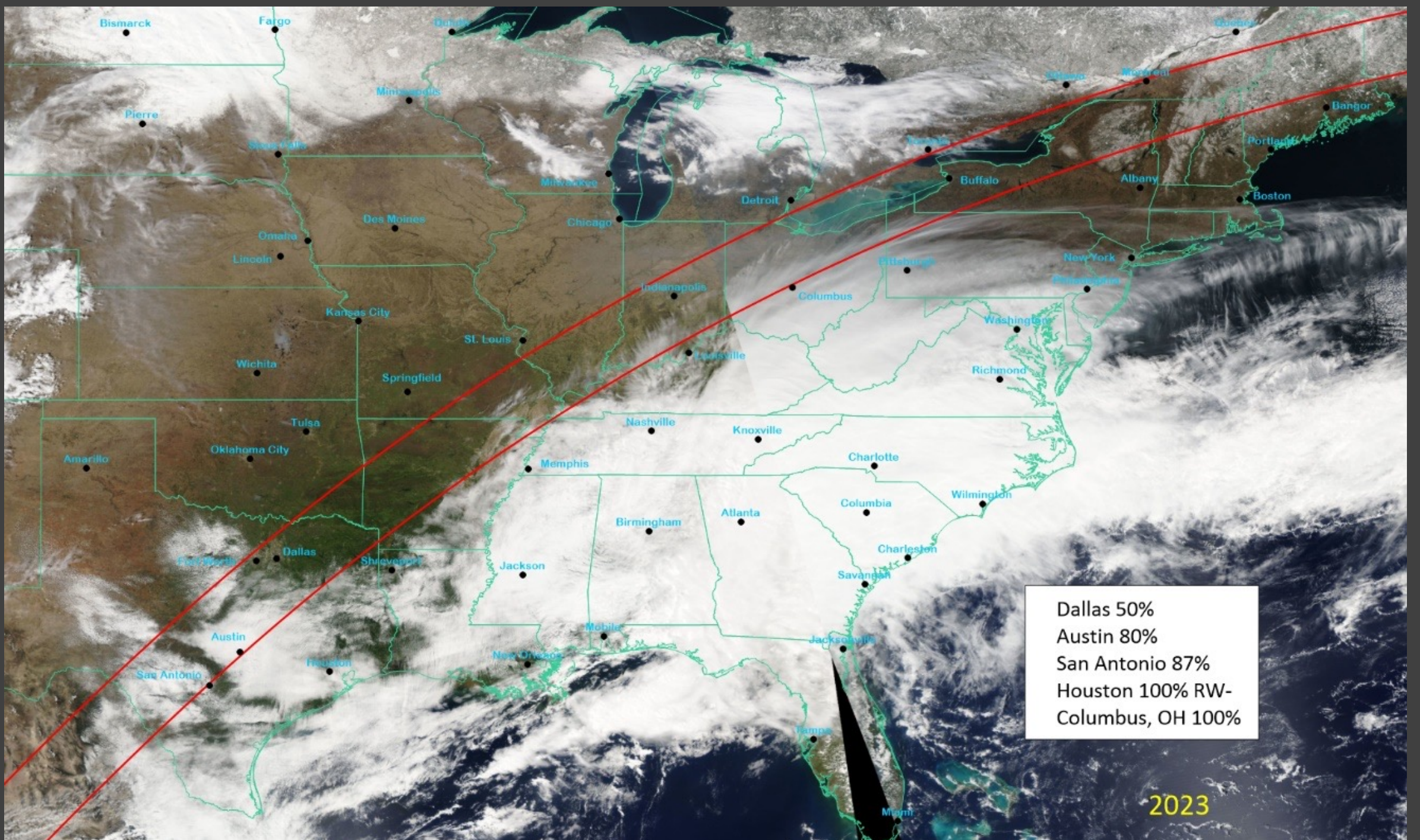
TRW

2021 Oct 14

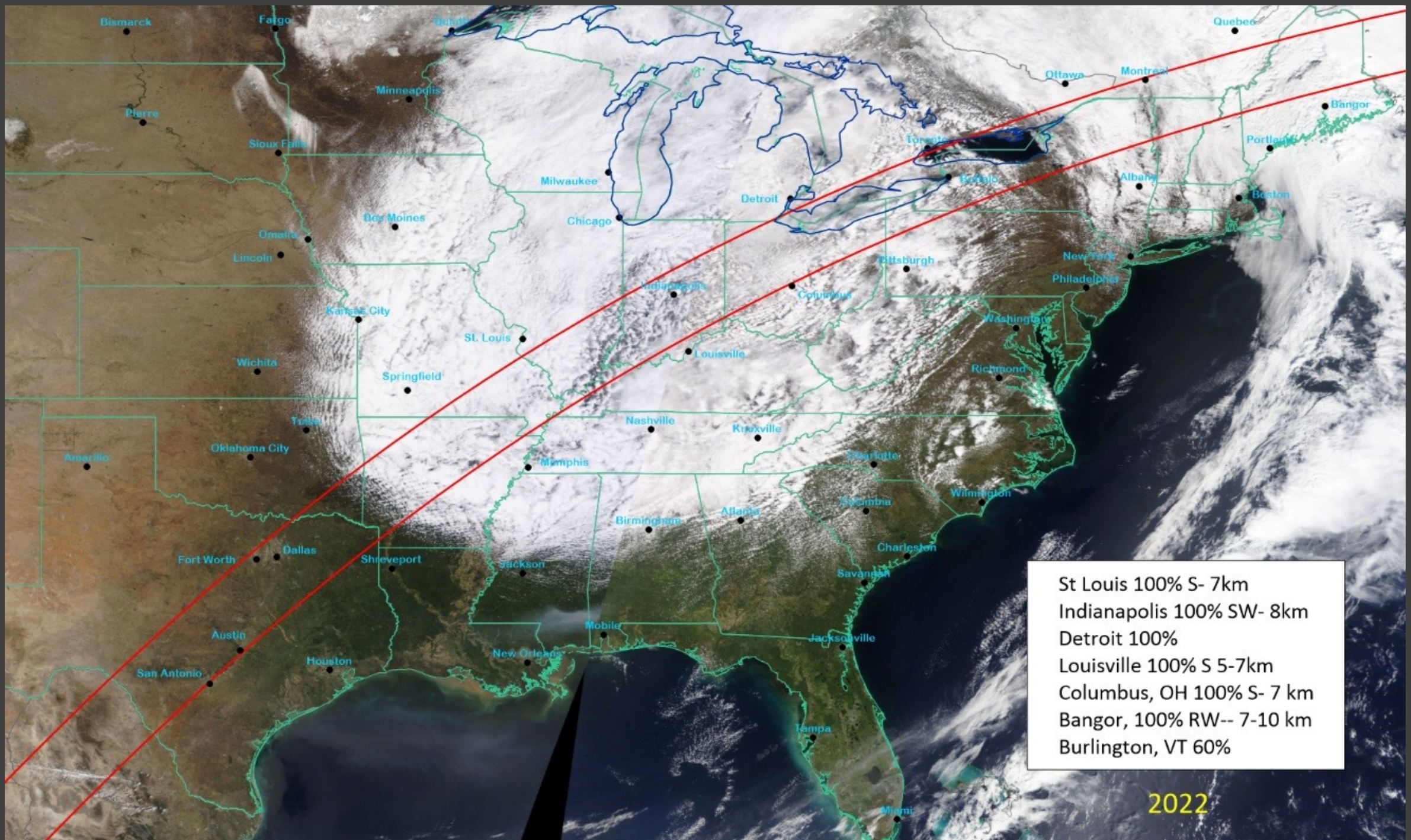


2016 Oct 14



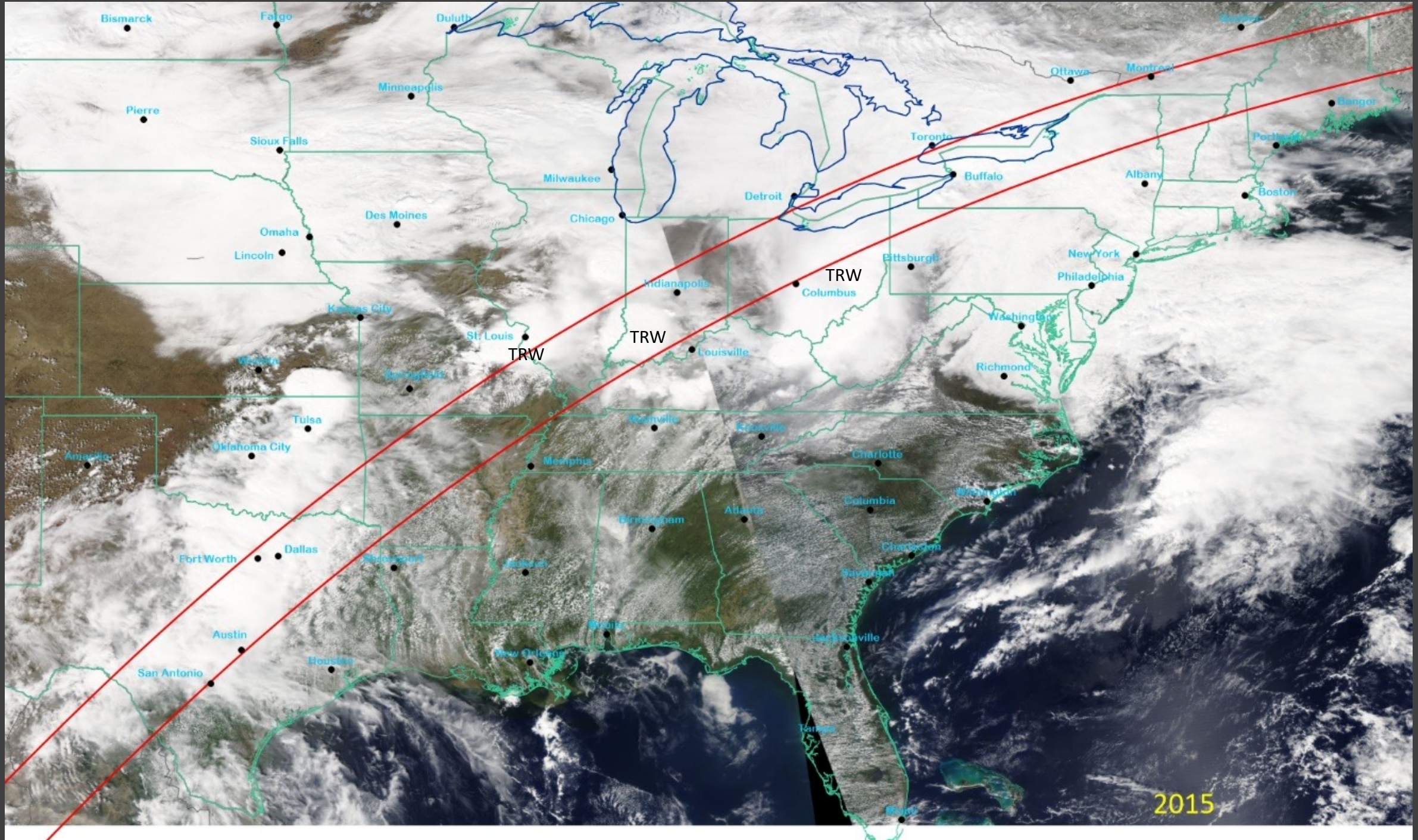


2023

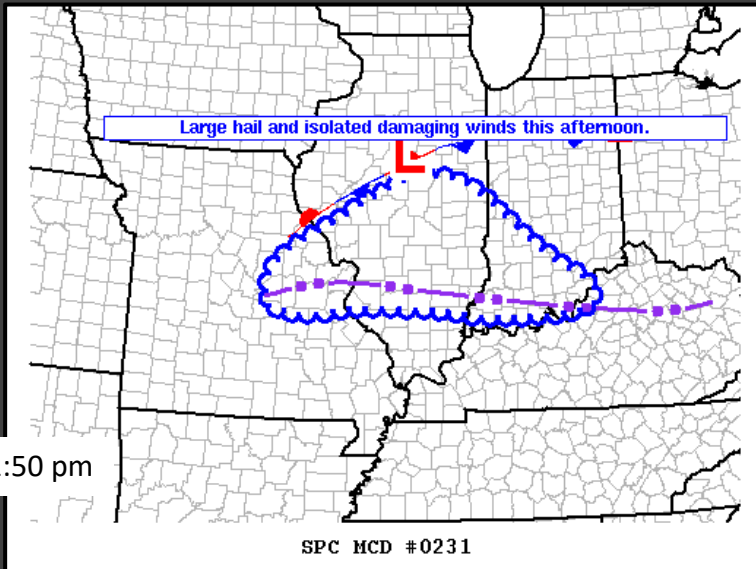
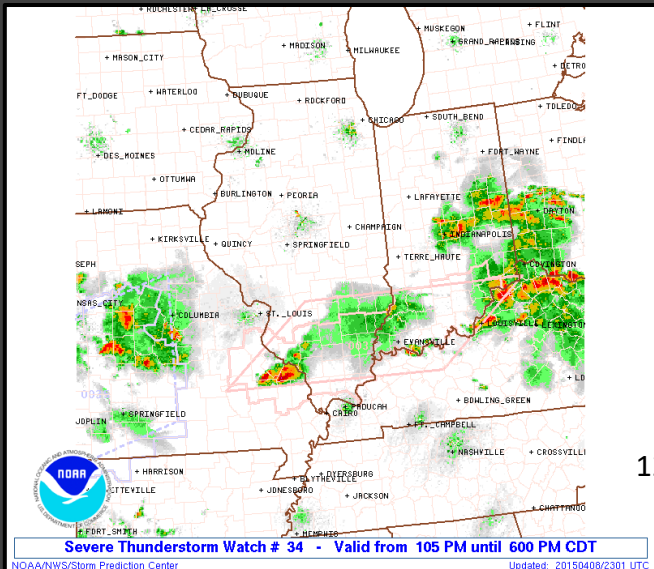
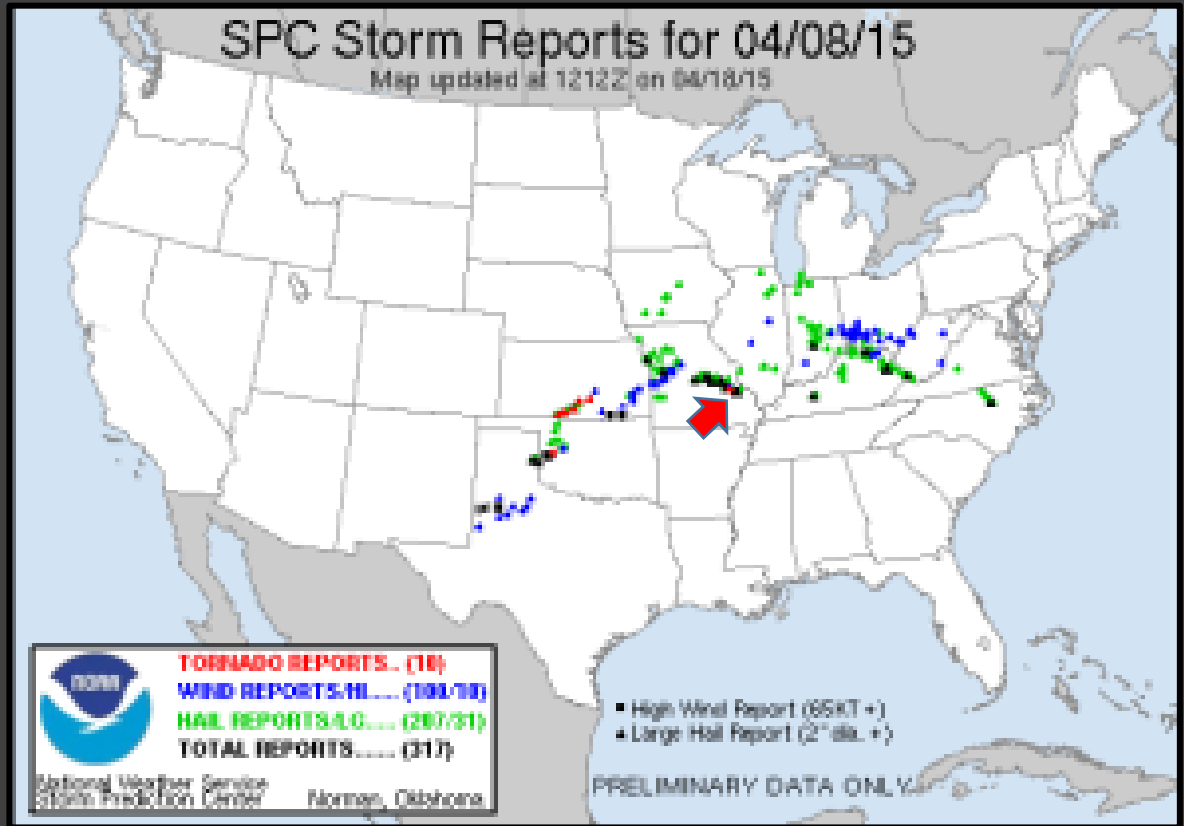
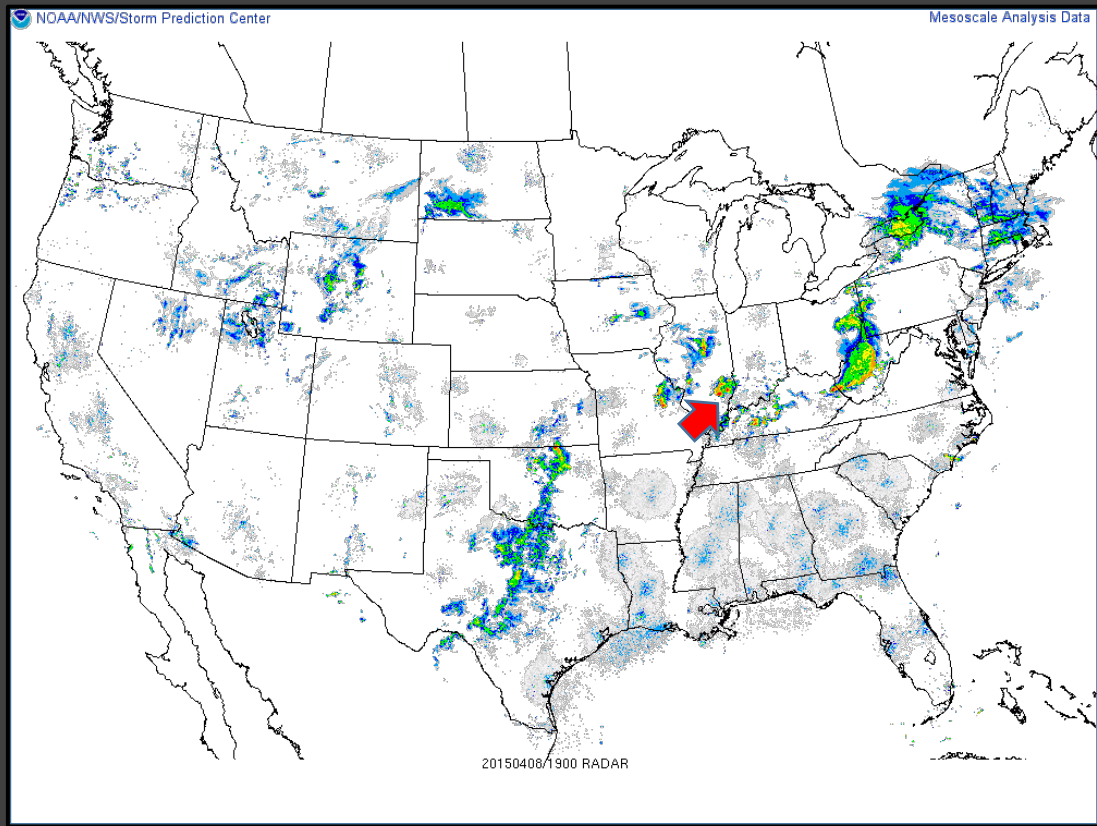


St Louis 100% S- 7km
Indianapolis 100% SW- 8km
Detroit 100%
Louisville 100% S 5-7km
Columbus, OH 100% S- 7 km
Bangor, 100% RW-- 7-10 km
Burlington, VT 60%

2022



2015



April 08, 2015

Some final thoughts:

Be flexible enough to handle embedded weather such as severe thunderstorms or low visibility in snow or fog

Watch weather forecasts in the days ahead of the eclipse to anticipate the direction and extent of the migration

For events, have a Plan B in case of a cloudy day

Movement toward the path from outlying areas may be the most affected by weather because those travellers are more committed to the eclipse

Heavy cloud will likely curtail movement; people will opt out

Border crossings may be busy