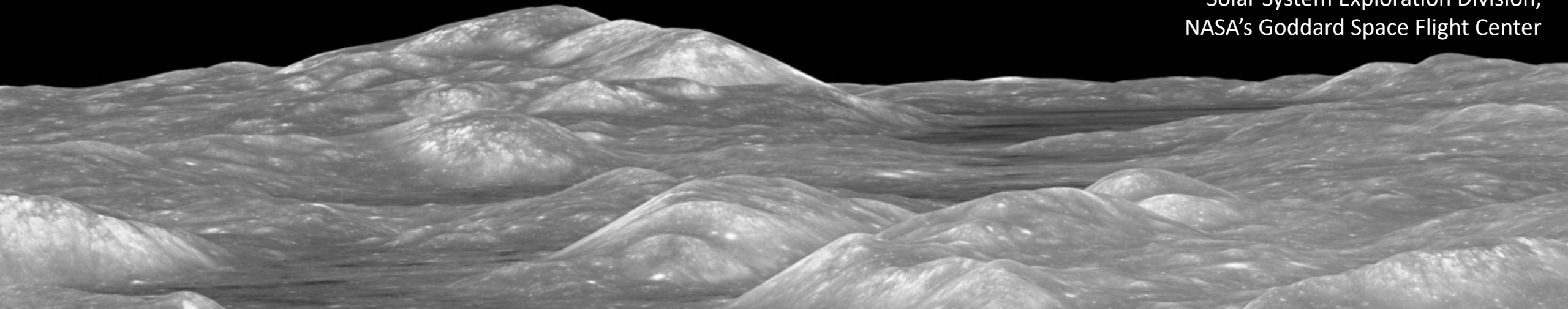


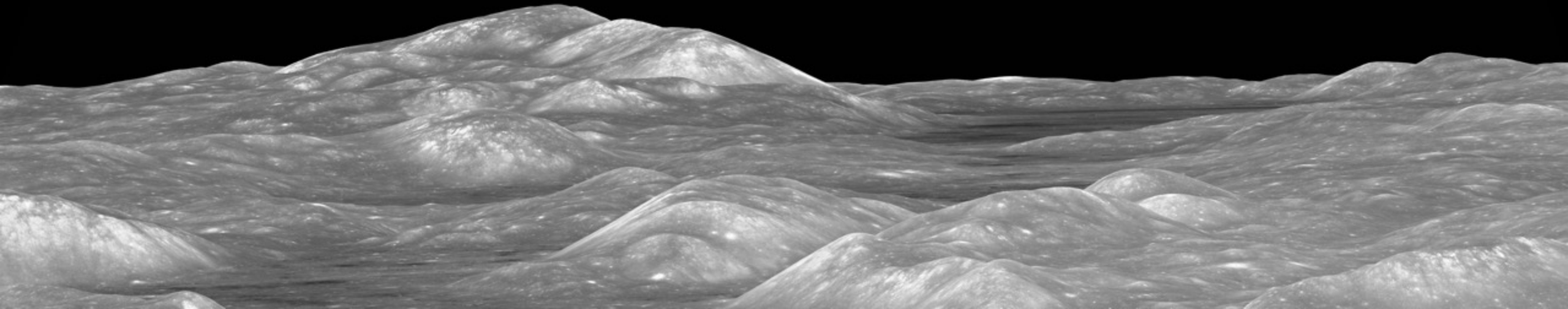
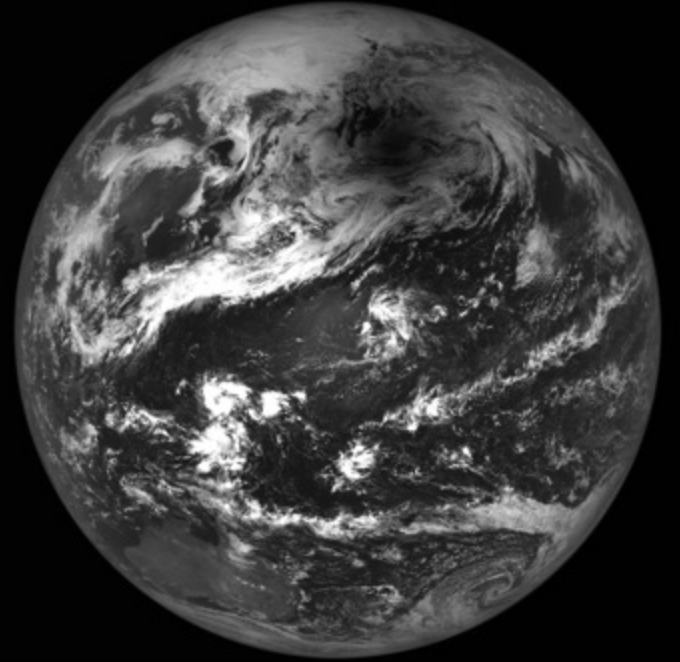
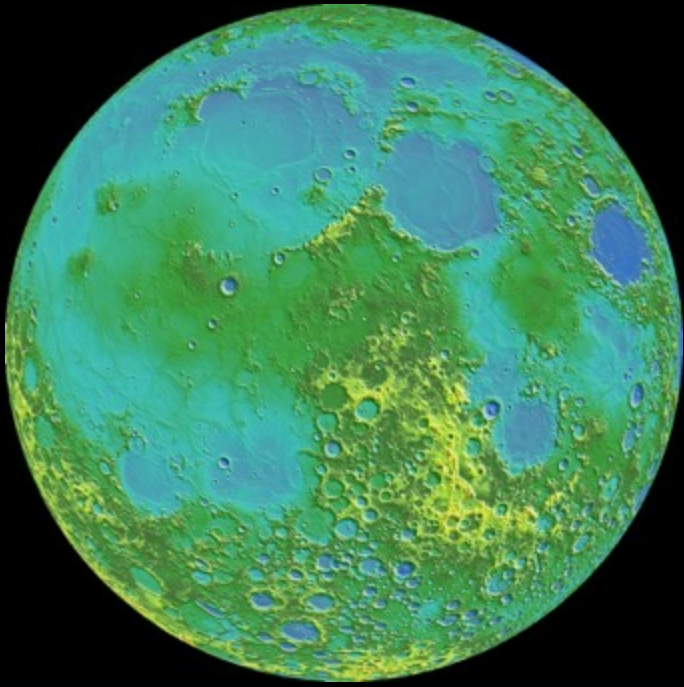
Andrea Jones

Public Engagement Lead

Solar System Exploration Division,
NASA's Goddard Space Flight Center



The Moon: The Center of a Solar Eclipse





NASA Moon @NASAMoon

HA HA HA I've blocked the Sun! Make way for the Moon. #SolarEclipse2017

NASA Sun & Space @NASASun

You blocked @NASASun

Are you sure you want to view these Tweets? Viewing Tweets won't unblock @NASASun

Yes, view profile

Who to follow · Refresh · View all

NASA Goddard Images

NASA Earth Observatory

1:15 PM · Aug 21, 2017 · Hootsuite

150.4K Retweets 9,947 Quote Tweets 327.5K Likes

LRO Activities



Catch the
SOLAR ECLIPSE
AUGUST 21
2017

PARTIAL SOLAR ECLIPSE
TOTAL SOLAR ECLIPSE

#eclipse2017

ECLIPSE2017.NASA.GOV

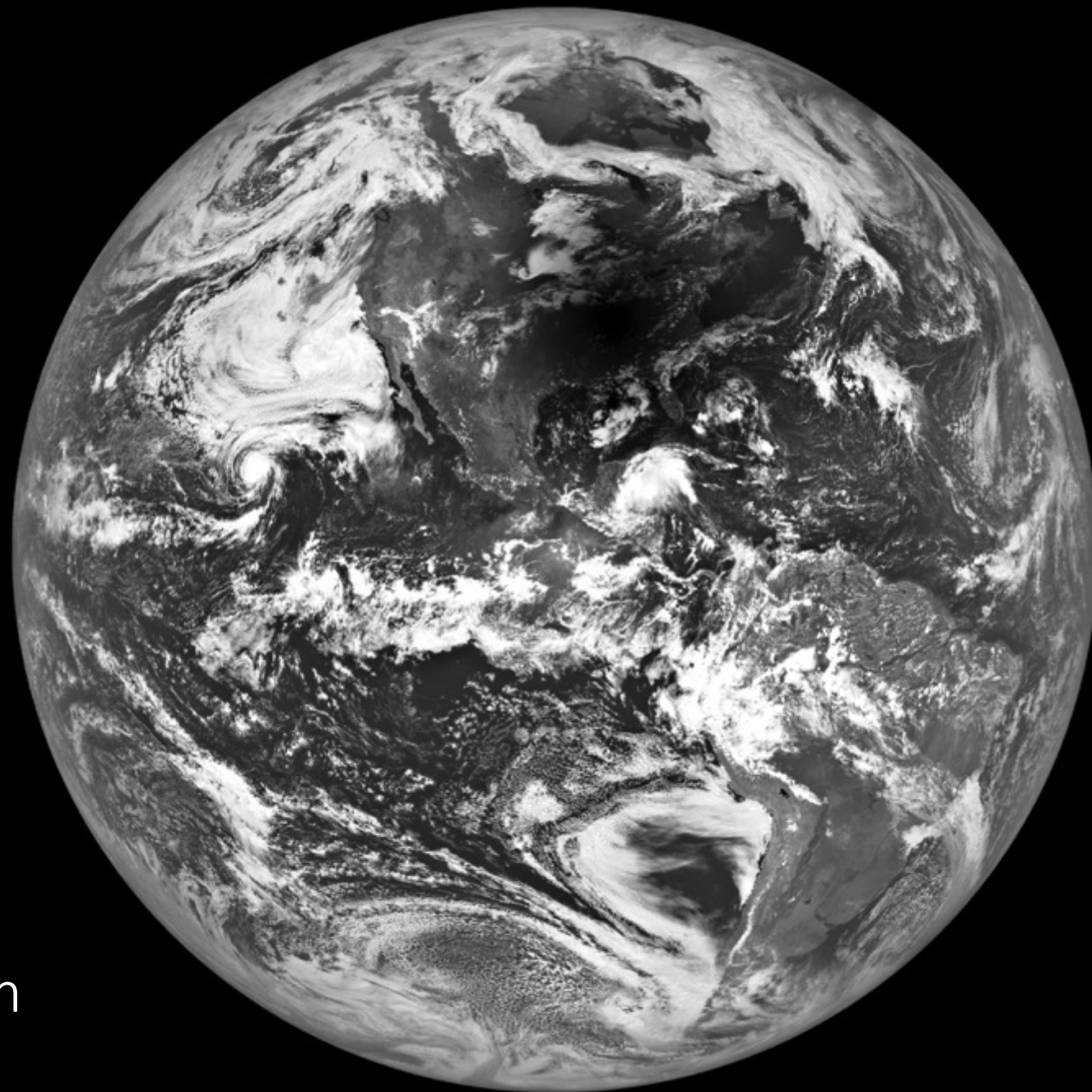
THEN CATCH
International
OBSERVE THE
MOON NIGHT
OCTOBER 28
2017

The Moon: the central player in the total solar eclipse and the highlight of International Observe the Moon Night!

#observethemoon

OBSERVETHEMOONNIGHT.ORG





Wave at the Moon
Image captured by
LRO Camera 8/21/17



Training for Interpreters

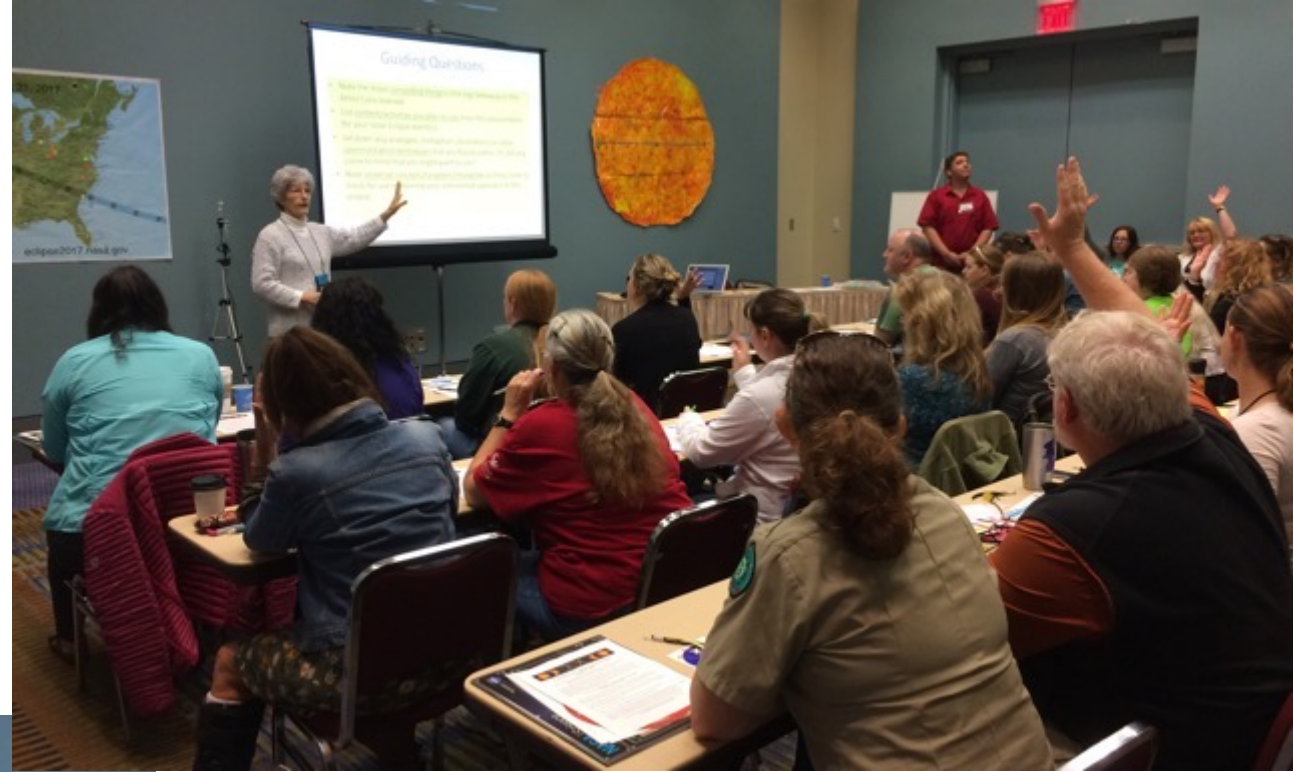
Earth to Sky
Interpreting the Eclipse
webinar series





Training for Interpreters

Solar eclipse session at the
National Association for
Interpretation National Conference





Homestead National Monument of America
August 21 at 8:48am · 📍
Andrea Jones from NASA - National Aeronautics and Space Administration and The String Beans are getting ready for Totality by practicing how to safely view the Total Eclipse! U.S. Department of the Interior
#Eclipse2017 #DarknessOverThePrairie #NationalParks



Credit: NPS



LRO + Earth to Sky + NPS



Credit: NPS



2017 Eclipse in Homestead National Monument



Credit: NPS





Select Recommendations for (2023 +) 2024 Eclipse

See You in the Shadow: A National Parks and NASA Collaboration

Celebrating the 2017 Great American Eclipse: Lessons Learned from the Path of Totality; ASP Conference Series, Vol. 516

- NASA and NPS partnering is highly beneficial
- Make use of existing Agency relationships + infrastructure
- Strategically target underserved locations
- Cultural and historical connections are very meaningful
- Use the eclipse to provoke further learning
- Support educational opportunities before and after the eclipse
- Give greater attention to areas outside the path of totality
- For locations at which significant NASA presence is planned:
 - Conduct planning site visit(s) of coordinating team
 - Plan for the support team to arrive at least 3 days prior to the event
 - Encourage out of town staff to stay with locals
- Pair short duration hands-on activities with access to Subject Matter Experts to extend and deepen impact
- Encourage and train volunteers to assist in all aspects of the operation

